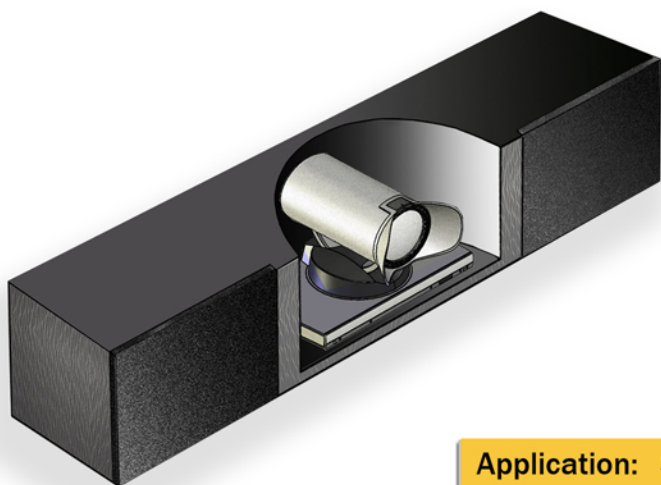


LEGACY PROFESSIONAL SERIES

Legacy V-271 and V-471 Self-powered speaker systems



The Legacy V-271 and V-471 speaker systems are designed to be mounted above, below, or between on-wall video monitors. Each system incorporates two channels of ICEpower® auto-sensing amplification and provides stereo or mono RCA inputs on the recessed rear panel. Camera outputs and AC line are routed through a rear grommet. The V-271 employs two custom 7" cast frame drivers with silver/graphite woven diaphragms and dispersion enhancing phase plugs.

Application: Sound reinforcement for video monitors
Features: Specialized cavity to incorporate tracking video camera
Venues: Conference rooms, Classrooms, Media rooms

Camera Available Separately

The V-471 provides increased power and bass extension with two additional 7" bass drivers and higher amplifier current. The two tweeters in each system are a 1" silk dome for wide dispersion, with a semi-horn for extended low frequency range. A heat sink is mounted to the neodymium magnetic structure to provide additional power handling.

V-271



V-471



The Conference Room Audio Solution.



Speaker System	V-271	V-471
Output Format	2 way /stereo or mono	2.5 way/stereo or mono
Intended Location	Half space/wall loaded	Half space/wall loaded
Design Type	Speech optimized	Speech, music
Directivity Index	3.0 - 3.5 100Hz to 5kHz	3.0 - 3.2 100Hz to 5kHz
Internal Amplification	2 x 30 watts <1% distortion	2 x 50 watts <1% distortion
High Frequency Driver	1" neo silk dome, thermal sink	1" neo silk dome, thermal sink
Mid Frequency Driver	7" custom S.G. cone, cast frame	7" custom S.G. cone, cast frame
Low Frequency Driver	NA	7" custom S.G. cone, cast frame
Frequency Range	80Hz- 20kHz	60Hz - 20kHz
Sensitivity 2.83 Volts	91.5 dB/ 1m	93.5 dB/ 1m
Input Sensitivity	1.0 Volts	1.2 Volts
Input connectors	Dual RCA 115 V AC	Dual RCA 115 V AC
Finish	Charcoal-EmbossedAluminum	Charcoal-EmbossedAluminum
Installation	Wall or shelf	Wall or shelf
Mounting/Attachment	Bolts into threaded inserts	Bolts into threaded inserts
Dimensions (inches)	8.25 H x 8 D x 47.6 W	8.25 H x 8 D x 63.6 W
Weight	38 lbs	55 lbs
Electrical Requirements	115 VAC	115 VAC

The drive components are selected to reproduce the spoken word with high clarity. The directivity index of each speaker channel is acoustically optimized for the half-space condition predicated by wall placement. The internal crossover compensates for the boundary induced amplitude effects. The amplifier is matched to the driver components to provide ample power to either system.



LEGACY PROFESSIONAL SERIES

Measurements presented are for the V-271 system. The V-471 is approximately 16 inches longer.

