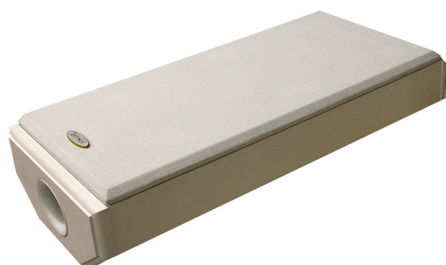


LEGACY PROFESSIONAL SERIES

SKYLINE 7

SKYLINE SERIES



The smallest of the Skyline series- the Skyline 7 features two 7" drivers and a spiral ribbon tweeter in a sleek design that is sure to blend in and compliment its surroundings. The Skyline 7 provides clarity and performance in a package that can be either corner or flat mounted.

Application: Broad range corner or wall mount monitor

Features: May be mounted vertically or horizontally

Venues: Rear channels, meeting rooms, sanctuaries

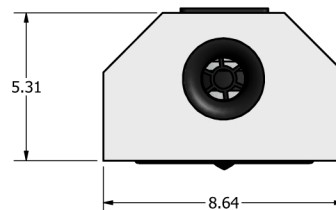
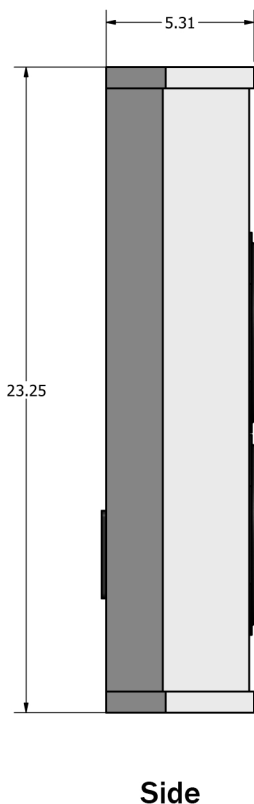


Speaker System	Skyline 7
System Type	Vented, 3 driver, 2 way system
Mounting	Corner or wall, bracket provided
System Directivity	60 degrees horizontally, 50 degrees vertically
Projection Distance	6-25 feet
Impedance	4 Ohm
Tweeter	1" spiral ribbon
Midrange	7" Silver/Graphite with cast frame
Midwoofer	7" Silver/Graphite with cast frame
Low Frequency Alignment	Vented
Frequency Response	59-25k (Hz, +/- 3dB)
Sensitivity 2.83Volts	90.5 dB
Crossover Frequency (Hz)	3k
Inputs	1 pair binding post, recessed cup
Dimensions (inches)	23.25 H x 8.64 W x 5.31 D
Weight	22 lbs each

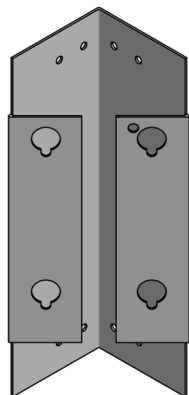
Specifications are subject to change. We reserve the right to improve our products at any time.



Skyline 7 Dimensions (inches):



Mounting Options:

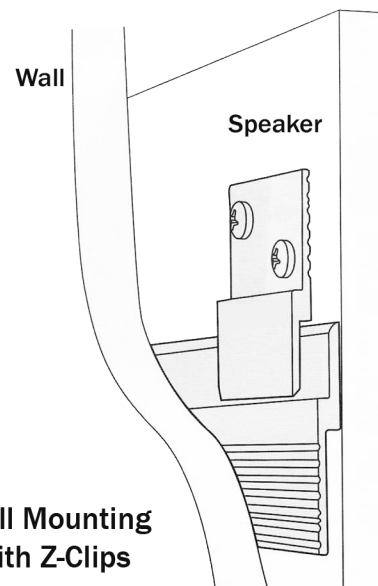


Bracket for
Corner Mounting

Recessed input terminals allow easy connection via 5 way binding posts.

Skyline 7 can be corner mounted vertically or along the ceiling. When horizontally mounting, provide additional anchoring by installing an additional screw through the cabinet into framing by removing one of the 7" drivers.

When mounting flat to wall, use a pair of Z-Clips as shown with the longer bar clip anchored to wall studs.



Wall Mounting
with Z-Clips

Details:

Black textured finish is standard. Wood veneers available upon request.

Black grille cloth is provided with all finishes except white which is supplied with white cloth.