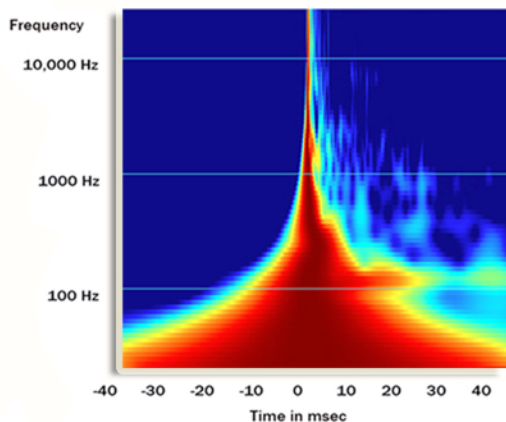


Wavelet™ is a control preamp, a high-end DAC, a 2/3/4-way digital crossover with time alignment and a speaker correction system that will literally “learn” your room.



In an ideal world the right half of this wavelet measurement would appear just like the left half. But rooms are not perfect and resonances play havoc below 500Hz.

The Wavelet processor will analyze your room and make the calculations to reduce resonant energy as late as 40msecs. The improvement in tonal balance and pitch definition is not subtle.

Perfect Timing.

True Digital Flexibility

SPDIF: up to 192kHz/24bit TosLink: up to 96kHz/24bit

USB: All file formats up to 96kHz/24bit are sent directly from the PC to the Wavelet without any conversion. Higher resolution files such as PCM and DSD can be readily played back using software such as J-River (select: Greater than 192kHz under DSP STUDIO.)

Analog Friendly

Already have a favorite DAC with a volume control? How about a big vinyl collection? Analog lovers can take advantage of balanced XLR or unbalanced RCA inputs without concern of digital artifacts. An apodizing circuit corrects for the pre-ringing native to CODECs. Wavelet has adequate headroom to handle these higher level signals while functioning as a crossover and compensating for room resonances. Wavelet processes at 56 bits of depth in a domain more than *one trillion* times finer in resolution than that of a 16 bit CD.

The Wavelet is by design upgradable. The unit can download firmware updates directly when you choose.



Wavelet™ comes with a precision calibrated microphone and easy to use control interface for mobile devices.

WLAN USB: includes Wifi adapter



Wavelet™ will assure all frequencies arrive with perfect timing and decay naturally without lingering.